

Road and Sidewalks

The City of Pembroke roads system consists of some 215 km of paved roads and 3.34 km of unpaved roads. All 215 km receive winter control operations. The sidewalk system consists of approximately 60 km.

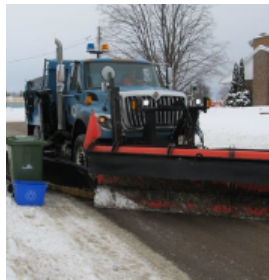
Damaged sections of existing roads, sidewalks and curbs are repaired on a priority basis. Maintenance of roads and sidewalks includes asphalt and concrete patching, asphalt resurfacing, concrete replacement, street sweeping, line painting, grass cutting, grading and dust control outside of the winter operations time of year.

The City of Pembroke requests the assistance of residents whose property abuts a sidewalk to shovel the sidewalk during the winter. The City of Pembroke also request residents that have a grass boulevard abutting their property to cut and maintain this area during the year.

Winter Control Operations

Snow plowing operations on roads begin once 50mm (2") or more of snow has accumulated. Salting and sanding operations run simultaneously with snow plowing operations and the type of application depends on road surface, weather, and temperature.

Sidewalks abutting priority and secondary routes are given top priority and will be plowed if snow accumulation exceeds 10 cm (4"). Plowing of sidewalks abutting local routes usually does not start until priority and secondary routes are completed and/or equipment is available. Sidewalk snow plowing is usually organized to commence a few hours after street plowing has started and is completed within 24 hours after the end of an average storm. Downtown sidewalk plowing is normally carried out with the snow plowing program.



Winter Operations

Residents of the City of Pembroke should be aware that the [Fouling of Highways, Municipal and Private Properties By-Law 2019-56](#) states that it is illegal for any resident of the City of Pembroke, or Contractor, to place snow or ice off any private property upon any street or roadway, including sidewalks and boulevards. **Residents are reminded that snow from your property must be stored on your own property.**

Winter Parking Restriction

Municipal By-law 2005-55 as amended as follows:

Section 4 – Snow Removal

- a) No person shall park a vehicle on any part of a street, highway or City boulevard in such a manner as to interfere with civic or municipal services, such as snow plowing or the removal of snow and ice.
- b) No person shall park a vehicle, except a vehicle used for emergency purposes, on any part of a street, highway or City boulevard in the City of Pembroke between the hours of twelve midnight and eight o'clock a.m. when the City has scheduled snow plowing and/or snow removal operations. Vehicles parked on any part of a street, highway or City boulevard during the above-mentioned hours will be towed away at the owner's cost.

Section 5 – Winter Parking

- a) No Person shall park a vehicle from November 1 to April 30 between the hours of 12:00 a.m. to 7:30 a.m. on all streets north of and including Renfrew Street, both sides, from Pembroke Street bridge to Christie Street; on Mackay Street, both sides, from McAllister Street to Nelson Street; on Pembroke Street East, both sides, from Maple Avenue to the Pembroke Street bridge.

Curb Cuts

Curb cuts are completed a few times a year. Applications are available at the Operations Office at 460 River Road, Pembroke, and a cost per foot is applied (the cost varies per contractor). A permitted driveway access is based on lot frontage and cannot exceed twenty (20) feet or 30% whichever is the lesser. Residents are not to alter curbs without permission of the municipality.

Culvert Installations and Ditching

Culverts and ditches allow drainage to run below driveways and adjacent to roads. The municipality must do the installation and maintenance of both items. Residents are not to alter culverts or ditches without permission of the municipality.

Private Entrances

Maintenance of private entrances to residential and business properties are the responsibility of the owner. The City of Pembroke does not maintain entrances except for applicable culverts, curbs, gutters and sidewalks crossing entrances.

Road/Sidewalk Closures

Contact Supervisor of Roads & Fleet

613-735-6821 ext. 1415

Winter Sand Pick Up

City residents are encouraged to rake winter sand from ditches and boulevards. Please rake this material into piles along the shoulder or curb line and city crews will pick them up. All grass clippings and brush should be placed in green cart. Only winter sand will be picked up.